

## **Introduction**

Thanks for purchasing our Video Surveillance System.

This is just a brief explanation of how to configure and use the system.

The system has much more features but please refer to your provider for more detailed instructions.

This manual is divided in 3 Main areas:

- a) **How to Install the System**
- b) **Description of the Screens**
- c) **How to Use the System**
  - a. **How to Configure the System**
  - b. **How to Display Live Video**
  - c. **How to Display Recorded Video**
  - d. **How to archive Recorded Video**

**Thanks again.**

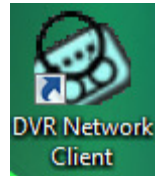
# How to Install the System

In order for you to use the system, you need an special program called 'DVR Client'.  
Either you can download from your provider or you have it attached to this document or you have in a CD.

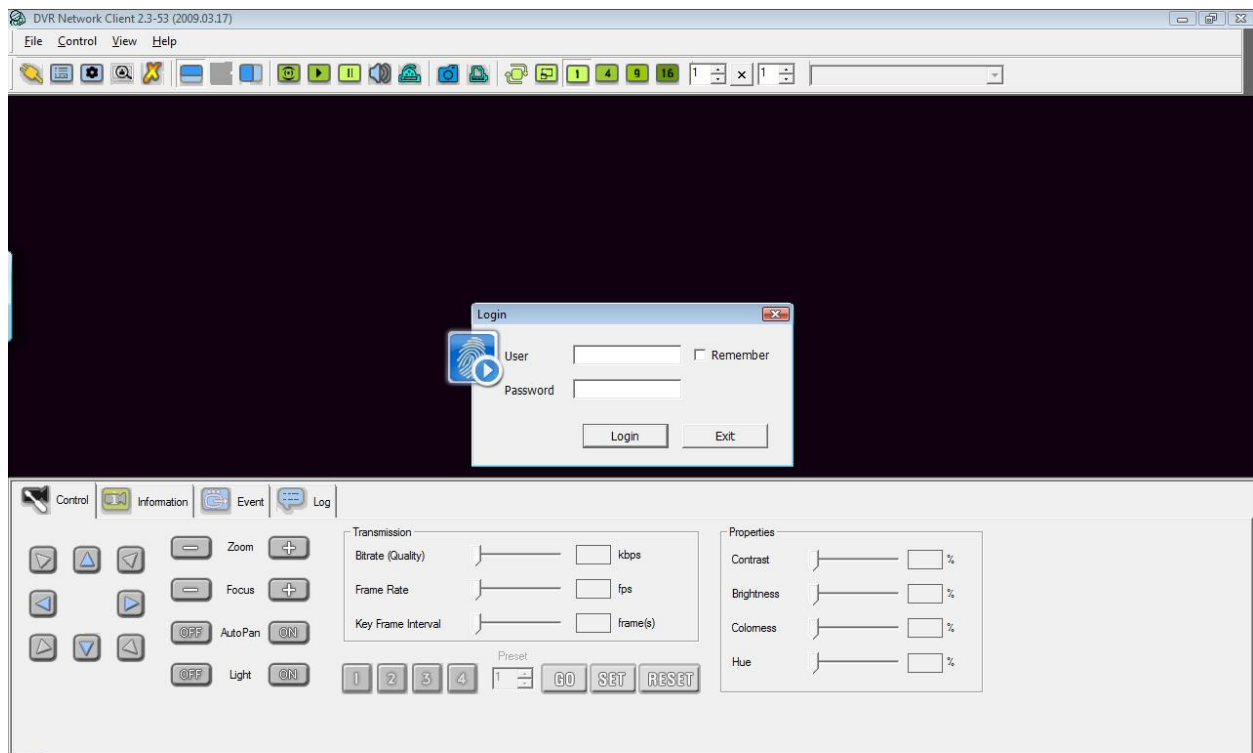
Please ask your provider for this piece of software.

If you already have it in your PC, you need to install it. Just double click on it (It should be something like **dvrclient-windows V.XXX**), and hit next to all the questions until it finish.

Once it finished you have in your desktop an icon like this



Double Click on this icon and you will see this screen

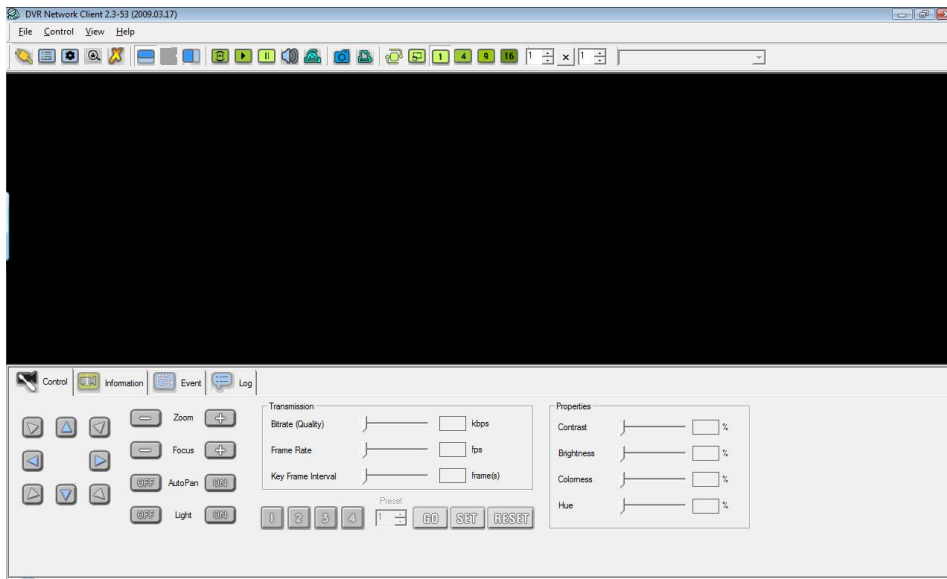


In **User**, type admin

In **Password**, type admin

Now you are ready to start understanding the system and using it

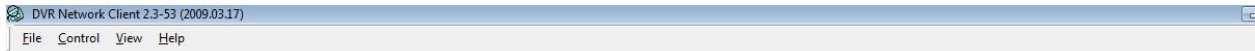
# Description of the Screens



Let's explain this screen:

There are 4 main areas:

a) Command Area



b) Icons Area

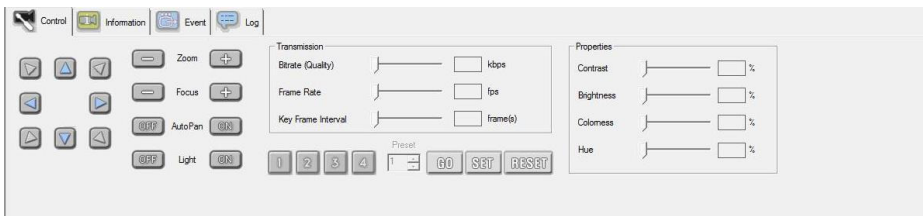


c) Display Area



The area is in black and is in the middle

d) Control Area



## a) Command Area

- 1) File
- 2) Control
- 3) View
- 4) Help

**Command area** and **Icons Area** are for the same purpose, so we are going to focus on the Icons Area.

## b) Icons Area

### Connect Button



Allows to Connect or Disconnect to a selected Video Server

### Server List Button



To Configure and Modify any Video Server

### Preference Button



To configure the system parameters

### Search Mode Button



To watch the Recordings

### Exit Button



To Exit to Windows

### Show/Hide Tool Tab



### Show/Hide Audio Button



To Control the audio/interphone of Remote Servers

### Motion Streaming Video



Shows only cameras that has motion

### Play/Stop Video



Play and Stop Video

### Mute-Audio



### Remote Record Activation/Deactivation



Activate/Deactivate Remote Recording

### Take a snapshot of a Camera



### Print Camera



### Rotate Camera Button



Allows switching cameras in the screen

### Full Screen



Allows watching cameras in Full Screen. To leave this mode press <esc> key

## 1-4-9-16 Mode




Select cameras to be displayed

## Multiple Camera Selection



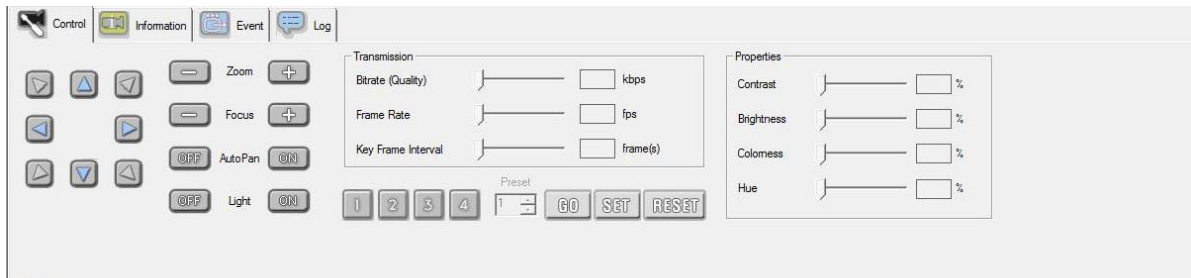
Allows selecting cameras to be displayed

## c) Control Area

The **Control Area** appears when you hit the Tool Tab Button .

In this area we have:

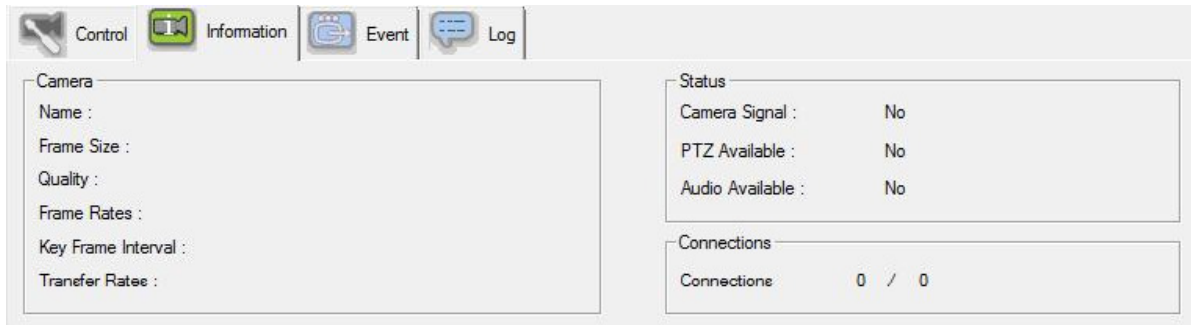
### 1) Control



In Control we have 3 functions:

- PTZ Control and Preset Functions  
If the camera selected is PTZ you can control it here
- Transmission Information  
Bit Rate: The more bit Rate is better quality but slower speed. The recommendation is from 80-320
- Camera Properties

### 2) Information Tab



Shows status of the System

### 3) Event

Is there is any DIO installed it allows you to control it

### 4) Log

Give information of the Status of the connection



# Using the System

## Initial Configuration

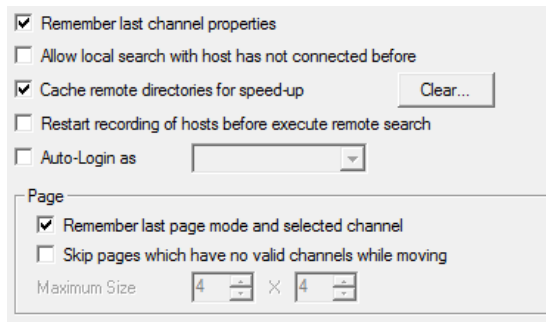
Before using the system, it is necessary to do some configuration.

This configuration has to be done just once, when you install the system.

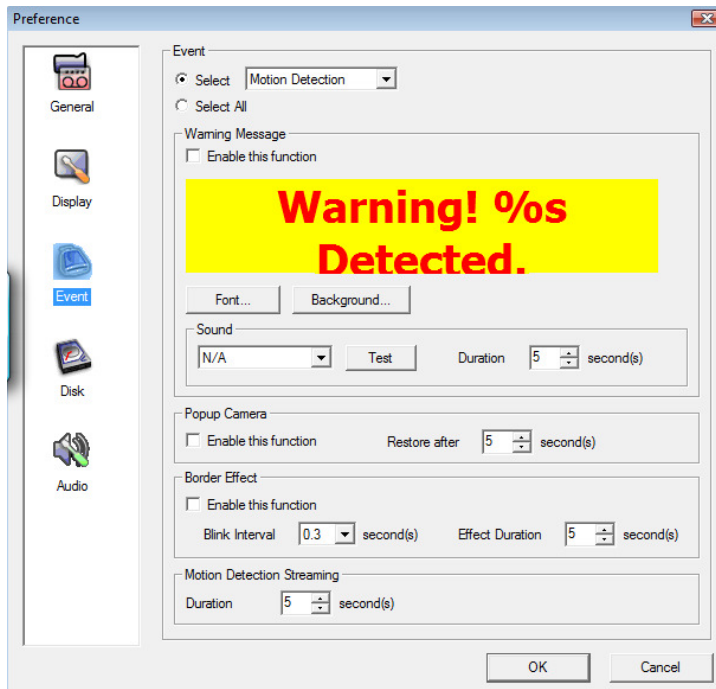
The first thing you need to decide is if you want to input username/password. Every time you run the system it will request for authorization to use it. If you do not want to input this information, do this:

Preference Button (  ) -> Select  , Auto-Login as and in the dropdown list admin. In this way the system won't ask anymore for the user.

Select also **remember last Channels Properties** and **Remember Last Page Mode**




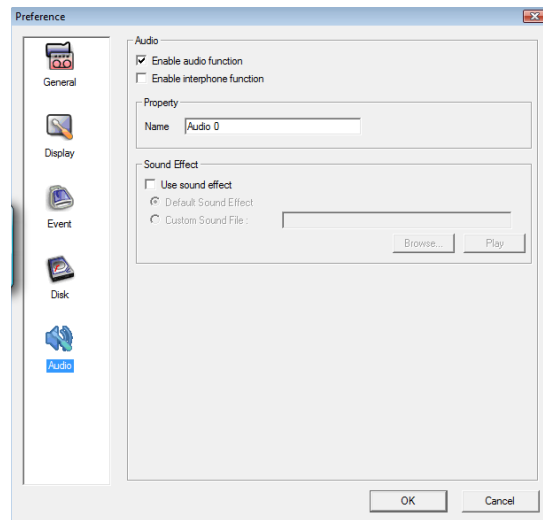
Then go to Event



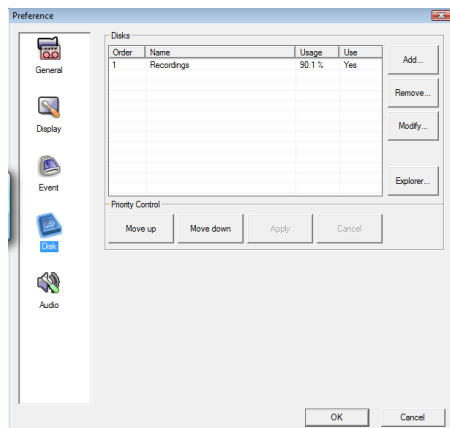
**Border effect.** This is used to show a yellow border around a camera that has motion. Un-Check that if you not want to see this.

If you have audio, you need to activate the audio in the system, do this:

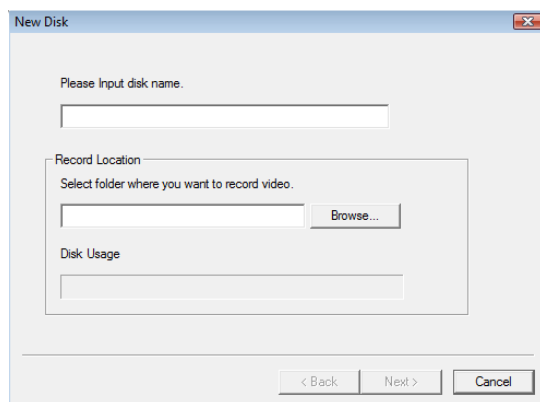
Go to Audio, and Enable Audio. Also enable the Sound Effect. This System requires to Exit so hit the Exit Button (  ) and restart the system



Also you need to enable the Remote Recording Capability if you plan to do remote Recording or to backup information from the remote Video Server to your local PC for later playback or archiving.

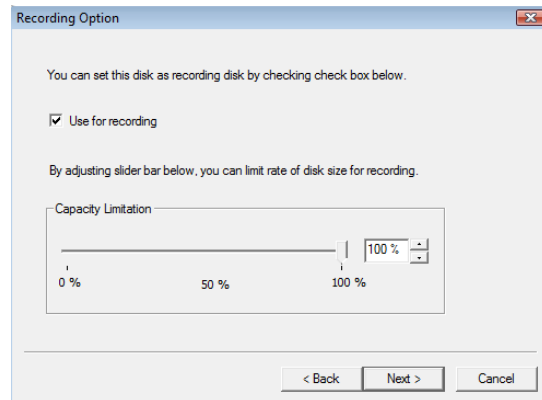


Go to Disk, and then hit Add



Write the name of the area where you want to store the information (I use the word **'Recordings'**). Hit Browse and select the folder where you want to store the recordings. I use the default drive 'C')

Hit next,




And select Use Recordings and move the slider to between 50% and 100%. This is leave room for your applications if you are recording video so they won't take the whole HD

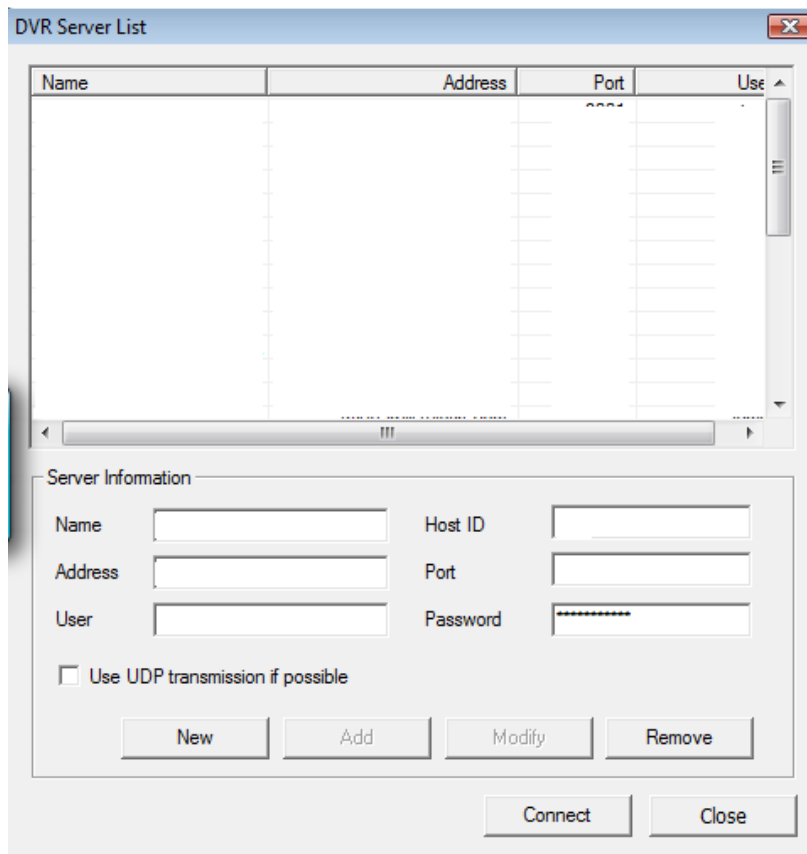
Hit Next

It will show you the information of the Recording activation, hit finish.

## Managing Video Servers

Before you connect to a Video Server, you need to configure the system to do that.

Select the Server List Button (  )



**Name:** Type Anything that remind your location

**Host ID:** Any ID (short Name)

**Address:** The IP Address of the Video Server or the URL assigned to it. Please contact your provider for this information

**Port:** Please ask your provider. Typically 8000

**User:** Please ask your provider

**Password:** Please ask your provider

**DO NOT USE UDP**



**Then hit Add**

**Then hit Connect**

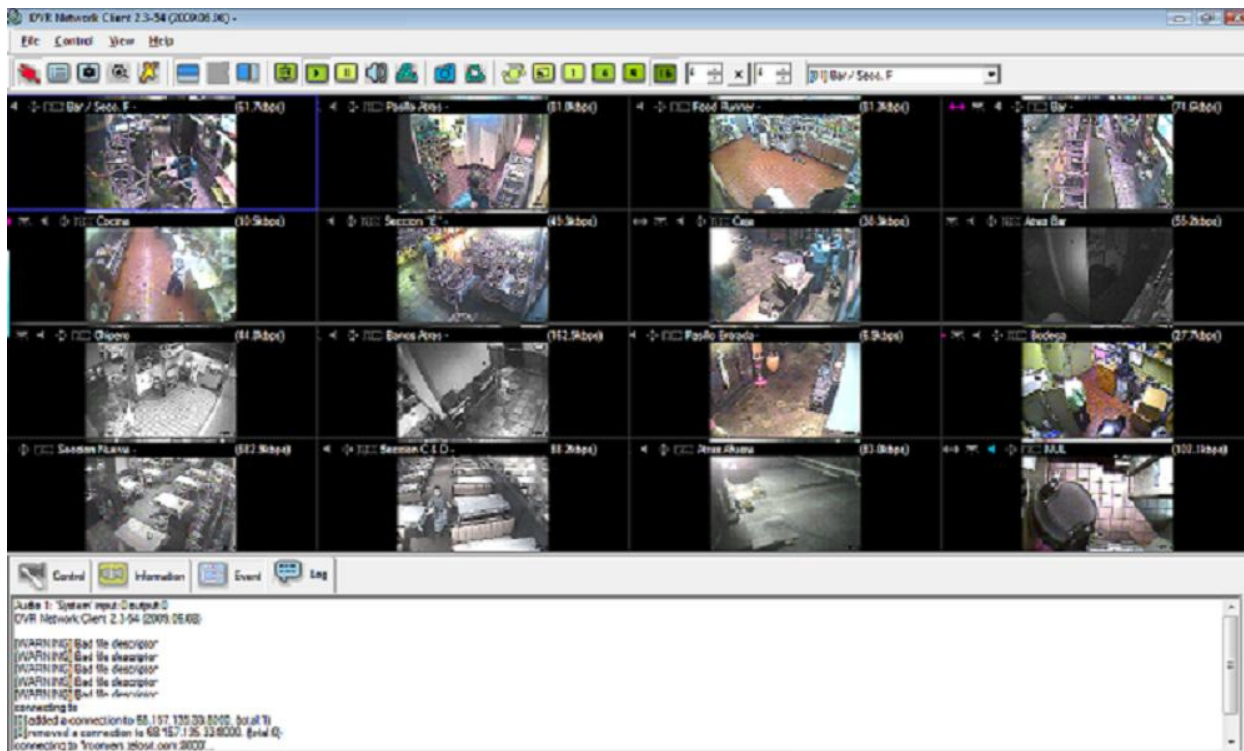
## How to play Live Video

Once you have configured the system is ready to be used.

To connect to a Video Server, first select it. To do that,

Select the Server List Button (  ), then select the video server you want to connect to and hit connect. If it does not connect, select Tool Tab Button (  ), go to Log and call your provider with the specific error.

Once connected, you see something like this:




This is sample with 16 cameras, you will see as many cameras as you have.


You can select 1,4,9,16 cameras or different number of cameras with the multiple cameras button (1-4-9-16 Mode





Multiple Camera Selection




To watch a bigger screen you can hide the toll tab with **Show/Hide Tool Tab** (  )

If you hit the **Motion Streaming Video** (  ), only the cameras with motion will be displayed.

You hit the Stop/Play button ( **Play/Stop Video** (   ) ) to stop a scene for later storage, printing, etc.

## How to play Recorded Video

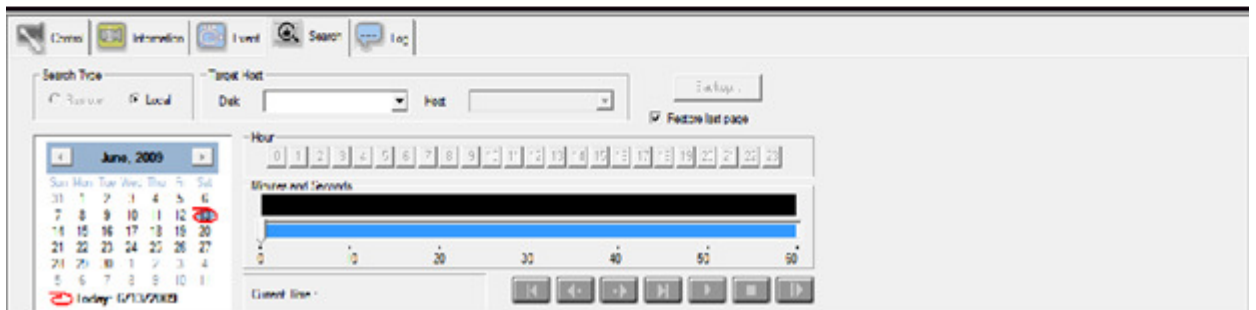
To watch the recorded video, first select the camera you want to watch the recorded video from (You can select multiple cameras, but it could be very slow)

Once you select the camera hit the **Search Mode Button** .

On the Control Area you see the a calendar. If you do not see the control area, hit **Show/Hide**

**Tool Tab** .

You see this



You can increase/decrease the control area by moving the border of the control area up and down.

In the Calendar you can select the month and the day. Only the days in bold have information. Then select the hour needed, again only the hours in bold have information. Finally move the slider to the minute needed, again only the minutes marked in red have information.

If you hit the play several times it will increase the speed.

To go back to play live video just hit the **Search Mode Button** , that now says Live Mode.

